

EIOPA DPM Database

Technical documentation

2023-03-17

Table of Contents

1	Introduction.....	3
2	Database Management System	3
3	Content.....	3
4	Structure.....	3
4.1	Relation to DPM metamodel/methodology	3
4.2	Relation to EBA DPM MS Access database	3
4.3	Relation to previous versions	4
4.4	Source (input) information.....	4
4.5	Representation of DPM model artefacts and relationships.....	4
4.5.1	Entities.....	4
4.5.2	Relationships	15

1 Introduction

This document describes the DPM database published by EIOPA (e.g. for Solvency II, Pension Funds, and other models).

2 Database Management System

The database is available in SQLite format.

3 Content

The database contains information requirements and validations metadata that resemble the DPM dictionary, annotated templates, and validation rules metadata; it is the description of the model (similar to an XBRL taxonomy).

4 Structure

4.1 Relation to DPM metamodel/methodology

Entities and relationships of this component of the database resemble the artefacts of the Data Point Modelling methodology. Therefore it is recommended that readers of this section familiarize themselves with documents listed at <http://www.eurofiling.info/dpm/index.shtml> and in particular the following documentation: https://dev.eiopa.europa.eu/Taxonomy/Full/2.8.0/Common/EIOPA_DPM_Documentation_2.8.0.pdf explaining the DPM artefacts on diagrams.

4.2 Relation to EBA DPM MS Access database

EIOPA database closely follows the structure (entities and relationships) of the EBA DPM MS Access database, e.g.: https://www.eba.europa.eu/sites/default/documents/files/document_library/Risk%20Analysis%20and%20Data/Reporting%20Frameworks/Reporting%20framework%203.2/Phase%203/1039939/DPM%20Database%203.2.phase3.zip. It is recommended that the readers of this section read also *CRD4 DPM - Database description - v2.1.pdf* embedded in the compressed folder <http://www.eba.europa.eu/documents/10180/781471/DPM+Database+2.2.zip/2dbcf8e5-5990-41e3-a068-5ddcb081ad08>.

The main modifications and dissimilarities of the EIOPA DPM metadata component comparing to the EBA model include:

- different patterns used for reflection of data point keys (in EIOPA DPM database they are more XBRL oriented, with information on owners in form of canonical namespace prefixes),
- many-to-many relation between Table and Axis entities (allowing axes to be reused by tables which is a common case in some of the Solvency 2 templates),
- denormalization of the model by deletion of relationships to dedicated entities and inclusion that information as attributes in entities' columns (e.g. data type, period type, balance attribute),
- lack of versioning of data points which representation is limited to correspondence with cells rather than enumerating all possible combinations (especially in case of semi open axes constrained by hierarchies where the number of data points in some templates may amount to several millions),
- EBA table groups, templates, tables, and table versions are represented by EIOPA template groups, templates, template variants, business tables and annotated tables (versioned together with taxonomies) and tables (reused by taxonomies, linked with axes, cells, etc.),

- validation rules are limited to syntax rather than referring to database object representing corresponding DPM artefacts (axes, ordinates, cells, metrics, etc.).

4.3 Relation to previous versions

EIOPA DPM Database structure and content has been changed comparing to releases prior 2.8.0 where they included artefacts needed for the decommissioned a few years ago Tool for Undertakings.

From the following T4U Database components:

- information requirements and validations metadata;
- placeholder for data storage;
- entities whose structure resembles information requirements and is based on tabular views;
- validations' representation in SQL;
- T4U applications information;
- supporting views used by various components of the application;

only the first one remains in 2.8.0 and its content is roughly identical apart from:

- missing links to Annotated templates Excel layout (e.g. TC/TT/TL... entries in mTemplateOrTable) resulting from 4.4,
- field required for the T4U that are no longer populated (e.g. YDimVal, ZDimVal in mTable),
- Ordinate categorisations are only according to MD approach,
- tables grouping names don't distinguish between Template Variants/Groups/Template other than by level of nesting,
- entities containing definition of validations are now re-structured (simplified) and contain different syntactical representation of validation.

4.4 Source (input) information

DPM metadata in the database is generated from the metadata modelling platform used by EIOPA to define and maintain DPM models.

4.5 Representation of DPM model artefacts and relationships

4.5.1 Entities

Names of entities (tables) of this component of the database start with letters "m" for information requirements metadata and "v" for validation rules metadata followed by the short description of the entities' content.

The next sections introduce the entities defined for this component of the database by providing a general explanation of the entity's content and a table identifying entity's attributes (columns), their data type (in general, e.g. INTEGER, TEXT, DATE, ...) and short description.

4.5.1.1 *mOwner*

This entity is used to identify the institution that "owns" (i.e. defines and manages) a concept (see *mConcept* table) representing DPM artefact such as domain, member, hierarchy, dimension, table, axis, ordinate, etc.

Attribute	Type	Description
OwnerID	INTEGER	Artificial ID.
OwnerName	TEXT	Institution (owner) name. E.g. European Insurance and Occupational Pensions Authority, ...
OwnerNamespace	TEXT	Recommended namespace of an owner (the "core" part of the namespace, to be extended by suffixes representing different concepts).
OwnerLocation	TEXT	URI representing the root folder of the official location of taxonomy files.
OwnerPrefix	TEXT	Recommended prefix of an owner (used to construct XBRL codes of different concepts). E.g. "s2c", ...
OwnerCopyright	TEXT	Copyright text. Used in comments in XBRL taxonomy files.
ParentOwnerID	INTEGER	Points to OwnerID of an institution in case of extensions of the model.
ConceptID	INTEGER	Owner is also a concept (its name can be translated, it can be versioned, etc.). Not populated at the moment.

4.5.1.2 *mConcept*

This table is used to provide more information on various artefacts (identification of the owner, translations to national languages, managing changes in the definitions by setting various currency dates, etc.).

Attribute	Type	Description
ConceptID	INTEGER	Artificial ID.
ConceptType	TEXT	Type of a concept: Axis, AxisOrdinate, Dimension, Domain, Hierarchy, HierarchyNode, Member, Module, ReportingFramework, Table, Taxonomy, TemplateOrTable, ValidationRule
OwnerID ¹	INTEGER	Points to <i>mOwner.OwnerID</i> .
CreationDate	DATE	Date when concept was first created.
ModificationDate	DATE	Date when concept was last modified.
FromDate	DATE	Date when concept starts to be used in expression of information requirements.
ToDate	DATE	Date when concept ends to be used in expression of information requirements.

4.5.1.3 *mDomain*

This table lists domains. Domains group values of a particular kind. Domain may have an explicit list of allowable values (members) or specify values of a particular type or pattern (a "typed" domain). Domains provides the allowable values for dimension the reference them.

Attribute	Type	Description
DomainID	INTEGER	Artificial ID.
DomainCode	TEXT	Short code (usually two capital letters).
DomainLabel	TEXT	Descriptive label (in English).
DomainDescription	TEXT	Longer description (in English).
DomainXBRLCode	TEXT	Code (QName) used in XBRL documents, consisting of canonical namespace prefix followed by a domain code.

¹ In SQLite applies not existing OwnerID „0” for domain defining members representing metrics.

DataType	INTEGER	Indicates the allowed type of values (for Typed domains). One of the following "Boolean"/"Date"/"Integer"/"Decimal"/"Monetary"/"Percentage"/"Code"/"String".
IsTypedDomain	BOOLEAN	"Typed" domains allow any value of a particular type (i.e. string, number, date etc.), "explicit" dimensions only allow a choice from a given list of members.
ConceptID	INTEGER	Points to mConcept.ConceptID. Reference to concept (change, owner, and translation) information.

4.5.1.4 *mDimension*

Category/aspect used to describe and differentiate data points, each relates to one specific feature. Allowed values are taken from a referenced domain.

Attribute	Type	Description
DimensionID	INTEGER	Artificial ID.
DimensionLabel	TEXT	Descriptive label (in English).
DimensionCode	TEXT	Short code (usually two or three capital letters).
DimensionDescription	TEXT	Longer description (in English).
DimensionXBRLCode	TEXT	Code (QName) used in XBRL documents consisting of canonical namespace prefix followed by a dimension code.
DomainID	INTEGER	Points to mDomain.DomainID. Domain from which the allowable values for this dimension are taken.
IsTypedDimension	BOOLEAN	"Typed" dimensions allow any value of a particular form (i.e. any string of certain length or pattern, any number, a date etc.), "explicit" dimensions only allow a choice from a given list of members.
ConceptID	INTEGER	Points to mConcept.ConceptID. Reference to concept (change, owner, and translation) information.

4.5.1.5 *mMember*

An explicit possible value within a domain.

Attribute	Type	Description
MemberID	INTEGER	Artificial ID.
DomainID	INTEGER	Points to mDomain.DomainID. Domain to which this member belongs.
MemberCode	TEXT	Short code (resembling XBRL local name).
MemberLabel	TEXT	Descriptive label (in English).
MemberXBRLCode	TEXT	Code (QName) used in XBRL documents consisting of canonical namespace prefix followed by a member code.
IsDefaultMember	BOOLEAN	Identifies if the member is a default value (1) for a domain it points to (and as a result for all dimensions that refer this domain).
ConceptID	INTEGER	Points to mConcept.ConceptID. Reference to concept (change, owner, and translation) information.

4.5.1.6 *mHierarchy*

Hierarchies specify how members relate to each other, and can also define the aggregations from lower to upper levels in the hierarchy.

Attribute	Type	Description
HierarchyID	INTEGER	Artificial ID.
HierarchyCode	TEXT	Short code (often used also as @id on role definitions in XBRL). Usually contains referenced domain code followed by an underscore and sequential number.

HierarchyLabel	TEXT	Descriptive label (in English).
DomainID	INTEGER	Points to mDomain.DomainID. Domain this hierarchy relates to.
HierarchyDescription	TEXT	Description (in English) or application to dimensions or templates (for documentation purposes only).
ConceptID	INTEGER	Points to mConcept.ConceptID. Reference to concept (change, owner, and translation) information.

4.5.1.7 mHierarchyNode

Represents a node in a hierarchy of members, specifying how members relate to each other, and can also define the aggregations from lower to upper levels in the hierarchy

Attribute	Type	Description
HierarchyID	INTEGER	Points to mHierarchy.HierarchyID. Hierarchy to which this node belongs.
MemberID	INTEGER	Points to mMember.MemberID. Member this node represents.
IsAbstract	BOOLEAN	Identifies if a member is in the hierarchy merely for the reason of grouping.
ComparisonOperator	TEXT	Indicates the comparison relationship between this node and the aggregation of its children.
UnaryOperator	TEXT	Indicates the contribution of this node to the aggregation of its siblings.
Order	INTEGER	Position of this node within its set of siblings.
Level	INTEGER	Level of this node, lower-level numbered nodes contain higher numbered ones, i.e. lower levels are nearer the root (having level 1)
ParentMemberID	INTEGER	Indicates the parent of this node, if any - i.e. the level immediately above. Null for root nodes.
Path	TEXT	Path from the root node to this node, using MemberID split by comma.

4.5.1.8 mMetric

The fundamental conceptual meaning of a piece of information.

Attribute	Type	Description
MetricID	INTEGER	Artificial ID. Preferably it should match mMember.MemberID from which descriptive labels may be obtained (metric is a subtype of member).
CorrespondingMemberID	INTEGER	Points to mMember.MemberID (in case mMetric.MetricID does not match corresponding mMember.MemberID).
DataType	INTEGER	Type of data. One of the following (in brackets corresponding XBRL data types): "Date" (xbri:dateTimeType), "Percentage" (xbri:pureItemType), "Integer" (xbri:integerItemType), "Monetary" (xbri:monetaryItemType), "Decimal" (xbri:decimalItemType), "String" (xbri:stringItemType), "Boolean" (xbri:booleanItemType), "Enumeration/Code" (enum:enumerationItemType), "true" (xbri:booleanItemType with restriction to true), "URI" (xbri:anyURIItemType)
FlowType	TEXT	The time dynamics of the information, is it a value at a specific point in time ("Stock"), or measured over a time period ("Flow"). N.B. not necessarily resembles the XBRL "period type" where all metrics are assumed to be mapped to instant period (the reference date).
BalanceType	TEXT	"Credit"/"Debit"/Null.
ReferencedDomainID	INTEGER	Points to mDomain.DomainID. Domain of the allowed values for this Metric (for enumerated/code-typed Metrics).

ReferencedHierarchyID	INTEGER	Points to mHierarchy.HierarchyID/mHierarchyNode.HierarchyID. Indicates that the allowed values for this metric are restricted to those present in the referenced hierarchy.
HierarchyStartingMemberID	INTEGER	Points to mHierarchyNode.MemberID. Identifies starting member in the hierarchy (ReferenceHierarchyID) whose descendants (-or-self depending on IsStartingMemberIncluded) form valid values for a metric (taking into account mHierarchyNode.IsAbstract).
IsStartingMemberIncluded	BOOLEAN	Informs if the starting member identified by HierarchyStartingMemberID is also a valid value for a metric (or is it only its descendants).

4.5.1.9 mReportingFramework

Overall reporting framework. High level, stable concept. E.g. Solvency 2, ...

Attribute	Type	Description
FrameworkID	INTEGER	Artificial ID.
FrameworkCode	TEXT	Short code of a framework (e.g. solvency, ...)
FrameworkLabel	TEXT	Descriptive label (in English). E.g. "Solvency II", ...
ConceptID	INTEGER	Points to mConcept.ConceptID. Reference to concept (change, owner, and translation) information.

4.5.1.10 mTaxonomy

A specific description of the classification of the tables and data points of a reporting framework, at a particular point/period in time.

Attribute	Type	Description
TaxonomyID	INTEGER	Artificial ID.
FrameworkID	INTEGER	Points to mReportingFramework.FrameworkID. Reporting framework this taxonomy describes.
TaxonomyCode	TEXT	Short code of a taxonomy, e.g. sol2, ...
TaxonomyLabel	TEXT	Descriptive label (English), e.g. solvency2, ...
Version	TEXT	E.g. 1.5.2.c, ...
PublicationDate	DATE	Taxonomy publication date (e.g. 2015-02-28). To be used in namespaces of taxonomy files.
TechnicalStandard	TEXT	Identifier of the prescriptive technical standard which this taxonomy describes/models.
ConceptID	INTEGER	Points to mConcept.ConceptID. Reference to concept (change, owner, and translation) information.
FromDate	DATE	Date from which this taxonomy is/was valid.
ToDate	DATE	Date until which this taxonomy is/was valid.
ExcelTemplate	BLOB	Not used.

4.5.1.11 mTemplateOrTable

Identifies templates and tables (as defined in the Business and Annotated Templates).

Attribute	Type	Description
TemplateOrTableID	INTEGER	Artificial ID.
TaxonomyID	INTEGER	Points to mTaxonomy.TaxonomyID.
TemplateOrTableCode	TEXT	Short code, e.g. S.01.01.01.01
TemplateOrTableLabel	TEXT	Description (in English). Usually template/table title.
TemplateOrTableType	TEXT	One of the following: "TableGroup", "Business Table".

Order	INTEGER	Order (preferably global but not necessary) of a Template or Table for displaying templates and tables in tree structure.
Level	INTEGER	Level for displaying templates and tables in tree structure, usually: 1 for Templates Group, 2 for Template, 3 for Template Variant, 4 for Annotated Template or if content is limited only to the last two: 1 for Template Variant, 2 for Annotated Template.
ParentTemplateOrTableID	INTEGER	Parent template or table ID.
ConceptID	INTEGER	Points to mConcept.ConceptID.
TC	TEXT	Not used.
TT	TEXT	Not used.
TL	TEXT	Not used.
TD	TEXT	Not used.
YC	TEXT	Not used.
XC	TEXT	Not used.

4.5.1.12 mTable

The specific description of a particular table from a reporting framework, within a taxonomy, valid during a particular time period. Several "Tables" may represent the evolution of a particular "Business-"/"Annotated Table" over time.

Attribute	Type	Description
TableID	INTEGER	Artificial ID.
TableCode	TEXT	Short code of a table.
TableLabel	TEXT	Descriptive label (in English).
FromDate	DATE	Date from which this version of this table is/was valid.
ToDate	DATE	Date until which this version of this table is/was valid.
XbrlFilingIndicatorCode	TEXT	Code of the filing indicator used to indicate the reporting of this table (N.B. may be shared with other tables which form part of the same template, all of those tables will be considered filed or not filed as a single unit).
XbrlTableCode	TEXT	Not used.
ConceptID	INTEGER	Points to mConcept.ConceptID. Reference to concept (change, owner, and translation) information.
YDimVal	TEXT	Not used.
ZDimVal	TEXT	Not used.

4.5.1.13 mTaxonomyTable

Attribute	Type	Description
TaxonomyID	INTEGER	Points to mTaxonomy.TaxonomyID.
TableID	INTEGER	Points to mTable.TableID.
AnnotatedTableID	INTEGER	Points to mTemplateOrTable.TemplateOrTableID for TemplateOrTableType = "AnnotatedTable".
IsSimplyResuse	BOOLEAN	Indicates that a table from a previously released taxonomy is being directly reused without any modifications.

4.5.1.14 mAxis

Represents either a row, column, or sheet of a particular table that it is linked to via mTableAxis.

Attribute	Type	Description
AxisID	INTEGER	Artificial ID.
AxisOrientation	TEXT	Either X, Y or Z for row, column, or sheet respectively

AxisLabel	TEXT	Descriptive label (in English). Relevant for these axes with IsOpenAxis = 1, in particular Z axes (where it can be used e.g. to label a text or dropdown box for the user to enter/choose the Z axis value) and for open/semi-open Y axes (headers of columns in open tables).
IsOpenAxis	BOOLEAN	An "open" (1) ("closed" is 0) axis allows a variable number of entries, either chosen from a list of options or of a type of value. Used e.g. for vertical list tables, where a "line number" is used, and for "sheet per country/currency/sector" type tables.
ConceptID	INTEGER	Points to mConcept.ConceptID. Reference to concept (change, owner, and translation) information.

4.5.1.15 mTableAxis

Links axis and table to which it applies (enables reuse of axis for different tables).

Attribute	Type	Description
AxisID	INTEGER	Point to mAxis.AxisID.
TableID	INTEGER	Point to mTable.TableID.
Order	INTEGER	Required mainly for multiple Y or Z-axes. Indicates in what order the axes should be shown (i.e. in what order any text or dropdown boxes used to represent the axes should be displayed).

4.5.1.16 mAxisOrdinate

Represents a specific position on a closed axis (or the only ordinate on open axis referring to a typed dimension or semi-open axis pointing to a hierarchy). Tree structure of ordinates represents structure (indenting/nesting) of rows or columns.

Attribute	Type	Description
AxisID	INTEGER	Points to mAxis.AxisID.
OrdinateID	INTEGER	Artificial ID.
OrdinateLabel	TEXT	Descriptive label (in English). Text of a header.
OrdinateCode	TEXT	Row/column code (e.g. R0010, C0020, ...)
IsDisplayBeforeChildren	BOOLEAN	Hint for display. If 1 then this ordinate is intended to be displayed above or to the left of any child ordinates, if 0/null it should be shown below or to the right of them.
IsAbstractHeader	BOOLEAN	If 1, then this ordinate does not represent any reportable data row or column or sheet, e.g. it may be displayed either as a completely grey row/column, or as just a heading with no row/column for values etc.
IsRowKey	BOOLEAN	Identifies (if 1) ordinate that is a key column in an open table. Otherwise it is not key (may be left empty/nilled).
Level	INTEGER	Level of this ordinate, lower-level numbered ordinates "contain" higher numbered ones, i.e. lower levels are nearer the root (tree structure information).
Order	INTEGER	Position of this ordinate within its set of siblings.
ParentOrdinateID	INTEGER	Parent of this ordinate, if any - i.e. on the level immediately above.
ConceptID	INTEGER	Points to mConcept.ConceptID. Reference to concept (change, owner, and translation) information.
TypeOfKey	TEXT	Not used. Information about relations between keys in open tables along with their types and indication if they are mandatory or optional can be found in mConceptTranslation as <i>description</i> Role for these headers.

4.5.1.17 mOrdinateCategorisation

A pair of dimension and member describing one aspect of the categorisation of a particular position along an axis of a table.

Attribute	Type	Description
OrdinateID	INTEGER	Points to mAxisOrdinate.OrdinateID.
DimensionID	INTEGER	Points to mDimension.DimensionID. The dimension considered to describe (data in the cells that have) a specific position along an axis of a particular table.
MemberID	INTEGER	Points to mMember.MemberID. The relevant value of a dimension describing (data in the cells that have) a specific position along an axis of a particular table.
DimensionMemberSignature	TEXT	Signature for dimension and its member. Constructed as a component of mTableCell.DataPointSignature based on values of mDimension.DimensionXBRLCode, mMember.MemberXBRLCode and mOpenAxisValueRestriction (if applies).
DPS	TEXT	Same as DimensionMemberSignature but referring to XBRL codes rather than database IDs.
Source	TEXT	Not used.

4.5.1.18 mOpenAxisValueRestriction

For table with semi open axes (i.e. those allowing a choice of a variable number of sheets/rows/columns each having one value from a particular domain), the values allowed to be reported may not be all the values from a domain, but only a subset. This table indicates the allowed subset by referencing a member in a hierarchy, all member below the referenced member are acceptable values, if IsStartingMemberIncluded is true, the referenced member is also a valid value, otherwise it is not.

Attribute	Type	Description
AxisID	INTEGER	Points to mAxis.AxisID (for semi-open axis). Axis to which this restriction applies.
HierarchyID	INTEGER	Points to mHierarchyNode.HierarchyID. Values for a semi open axis are restricted to those in the given hierarchy.
HierarchyStartingMemberID	INTEGER	Points to mHierarchyNode.MemberID. If provided values for a semi open axis are restricted to the descendants (or self) of this member in the given hierarchy.
IsStartingMemberIncluded	BOOLEAN	If 1, then the referred starting member is a valid value, if not, only it's descendants are.

4.5.1.19 mTableCell

Represents an individual intersection of row, column (and sheet) for a particular table.

Attribute	Type	Description
CellID	INTEGER	Artificial ID.
TableID	INTEGER	Points to mTable.TableID. A table this cell is part of.
IsRowKey	BOOLEAN	Not used (this information is in mAxisOrdinate.IsRowKey).
IsShaded	BOOLEAN	Identifies if no data is expected to be entered into this cell, either because it is not required, or because this cell forms part of a heading, or the intersection of its row and column (and sheet) has no logical meaning.
BusinessCode	TEXT	Business code as assigned to a cell in the Business Templates (if applies) otherwise calculated as template and r/c codes.

DatapointSignature	TEXT	Signature of a data point represented by a cell. Identifies metric and dimension member pairs (sorted alphabetically based on dimension codes). In case of open values for metrics or dimensions uses wildcard (*), for semi-open axes refers information from mOpenAxisValueRestriction in square brackets [] and contains "?" character if default members are included in the referred hierarchy (and hence this dimension will be omitted in the XBRL instance document for this value). Created based on alphabetical concatenation of mOrdinateCategorisation.DimensionMemberSignarute (starting with the metric).
DPS	TEXT	Same as DatapointSignature but referring to XBRL codes rather than database IDs.

4.5.1.20 mCellPosition

Links a cell in a table to its position on the axes of that table by referring to ordinates on intersection of which the cell occurs.

Attribute	Type	Description
CellID	INTEGER	Points to mTableCell.CellID.
OrdinateID	INTEGER	Points to mAxisOrdinate.OrdinalID.

4.5.1.21 mConceptualModule

Represents modules in general, irrespective of taxonomy versions.

Attribute	Type	Description
ConceptualModuleID	INTEGER	Artificial ID.
ConceptualModuleCode	TEXT	Short code for module. E.g. ARS, ARG, ...
ConceptualModuleLabel	TEXT	English label of a module.

4.5.1.22 mModule

A module represents a reporting/filing unit, i.e. a set of tables that should be reported together in a single report (instance document).

Attribute	Type	Description
ModuleID	INTEGER	Artificial ID.
TaxonomyID	INTEGER	Points to mTaxonomy.TaxonomyID. Taxonomy to which this Module belongs.
ModuleCode	TEXT	Short code, e.g. ars, qrs, arg, ...
ModuleLabel	TEXT	Descriptive label (in English).
ConceptualModuleID	TEXT	Points to mConceptualModule.ConceptualModuleID.
DefaultFrequency	TEXT	Frequency of reporting of a module (quarterly, annually, ...). Currently unused.
ConceptID	INTEGER	Points to mConcept.ConceptID. Reference to concept (change, owner, and translation) information.
XBRLSchemaRef	TEXT	URI used for the schemaRef element in XBRL documents referring to this module. This is supposed to be the absolute URI to the official location of the taxonomy files in the domain of its owner.

4.5.1.23 mModuleBusinessTemplate

Indicates which Templates are included in each reporting module.

Attribute	Type	Description
ModuleID	INTEGER	Points to mModule.ModuleID. Module to which this entry relates.
Order	INTEGER	Sequence number to indicate (visual only) ordering of Templates within the Module. Templates and Tables within the module are presented as defined by tree structure information in TemplateOrTable table.
BusinessTemplateID	INTEGER	Template to be included in the Module. Points to mTemplateOrTable.TemplateOrTableID where TemplateOrTable represents TemplateVariant i.e. its Level = 3 (if all levels provided) or 2 (if content starts from TemplateVariant).

4.5.1.24 mLanguage

Stores information on languages that can be used for translation of concepts.

Attribute	Type	Description
LanguageID	INTEGER	Artificial ID.
LanguageName	TEXT	Name of a language in that language.
EnglishName	TEXT	Name of a language in English.
IsoCode	TEXT	Language ISO (639-1) code.
ConceptID	INTEGER	Points to mConcept.ConceptID. Enables translation of language names to different languages.

4.5.1.25 mConceptTranslation

Links concept (and whatever it represents) to its translation in different languages.

Attribute	Type	Description
ConceptID	INTEGER	Points to mConcept.ConceptID.
LanguageID	INTEGER	Point to mLanguage.LanguageID.
Text	TEXT	Text of the translation.
Role	TEXT	Type of documentation, e.g. <i>label</i> , <i>description</i>

4.5.1.26 vValidationRuleExpression

Details of each validation rules.

Attribute	Type	Description
ValidationID	INTEGER	Artificial ID.
ValidationCode	TEXT	Code of validation rule, e.g. "BV1325"
ErrorMessage	TEXT	Error message of validation rule.
LogicalExpression	TEXT	Test expression, e.g. { m: [s2md_met:ei1024], seq: False, id: v0} != [s2c_CU:x5] or {t: S.02.01.01.01, r: R0100, dv: 0, seq: False, id: v1, f: solvency, fv: solvency2} i= {t: S.02.01.01.01, r: R0110, dv: 0, seq: False, id: v2, f: solvency, fv: solvency2} i+ {t: S.02.01.01.01, r: R0120, dv: 0, seq: False, id: v3, f: solvency, fv: solvency2}
Filter	TEXT	Filter (if applies), e.g. matches({t: S.06.02.04.02, c: C0290, z: Z0001, dv: emptySequence(), seq: True, id: v3, f: solvency, fv: solvency2}, "^..4.\$") and {t: S.06.02.04.02, c: C0310, z: Z0001, dv: emptySequence(), seq: True, id: v4, f: solvency, fv: solvency2} = [s2c_PU:x16] and {t: S.06.02.04.01, c: C0090, z: Z0001, dv: emptySequence(), seq: True, id: v5, f: solvency, fv: solvency2} = [s2c_LB:x91]
Prerequisites	TEXT	Not used.
Join	TEXT	Join (if applies), e.g. join(dim({t: SR.02.01.07.01, r: R0780, c: C0010, z: Z0001, dv: 0, filter: dim(this(), [s2c_dim:PO]) = [s2c_PU:x40], seq: False, id: v5, f: solvency, fv: solvency2},[s2c_dim:NF]) = dim({t: SR.01.01.07.01,

		<i>r: R0790, c: C0010, z: Z0001, filter: dim(this(), [s2c_dim:PO]) = [s2c_PU:x60], seq: False, id: v1, f: solvency, fv: solvency2],[s2c_dim:FN]))</i>
Scope	TEXT	Scope (if applies), e.g. <i>scope({t: SR.26.01.04.02, c:C0060;C0080, f: solvency, fv: solvency2})</i>
SQL	TEXT	Not used.
IsEnabled	BOOLEAN	Indication is the rule is active.
IsPoint	BOOLEAN	Not used.
AlwaysOn	BOOLEAN	Not used.
IncludeInXBRL	BOOLEAN	Indication if rule is part of XBRL taxonomy.
ToleranceMargin	TEXT	Not used.
VariableNames	TEXT	Not used.
ConceptID	INTEGER	Points to mConcept.ConceptID.

4.5.1.27 vValidationRuleTables

Application of rules to tables and modules.

Attribute	Type	Description
ValidationRuleID	INTEGER	Artificial ID.
ModuleID	INTEGER	mModule.ModuleID of module to which rule applies.
TableID	INTEGER	mTable.TableID of table to which rule applies (if applicable)
Severity	TEXT	Either "Error" or "Warning".

4.5.1.28 vValidationRulePrerequisites

Currently not used.

Attribute	Type	Description
ValidationRulePrerequisitesID	INTEGER	
Prerequisite	TEXT	
PrerequisitesSql	TEXT	

4.5.1.29 vValidationRuleToPrerequisites

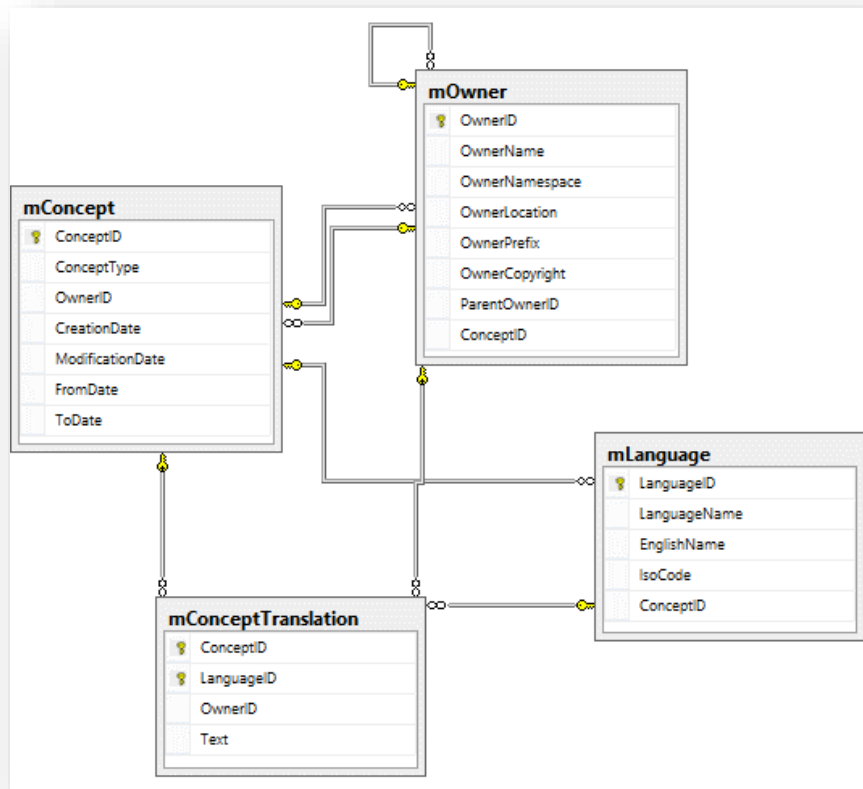
Currently not used.

Attribute	Type	Description
ValidationRulePrerequisitesID	INTEGER	
ValidationD	INTEGER	

4.5.2 Relationships

4.5.2.1 Concepts, owners, translations and references

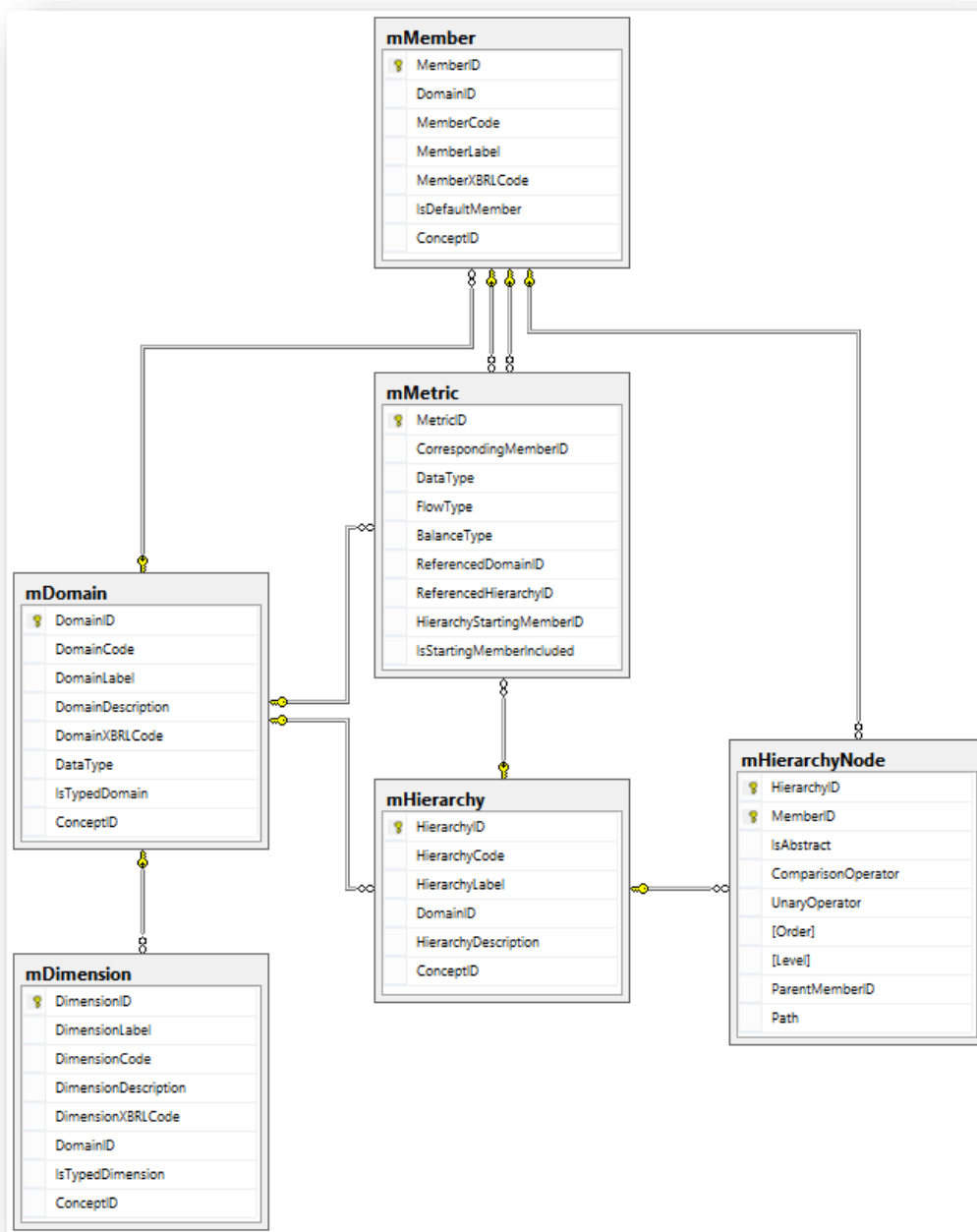
DPM artefacts from both, the dictionary (i.e. domains, members, dimensions, hierarchies, metrics) and the current information requirements (i.e. frameworks, taxonomies, templates and tables, axes, ordinates, etc.) can be defined by various institutions (owners) and have multilingual labels (translations). Therefore, these artefacts defined in various entities of the database refer to mConcept entity which supports metadata management, links to mOwner entity (in order to identify the institution that defined each artefact) and provide translations (mConceptTranslation).



Moreover, owners and languages are also concepts (for example language names can be translated in various languages, properties of owners can modify, etc.).

4.5.2.2 Dictionary (domains, members, hierarchies and dimensions)

Dictionary contains definitions of domains (mDomain). Each domain consists of members (mMembers) and is associated with dimensions (mDimensions) that further contextualize members in the information requirements section of the database. For documentation purposes and in order to support management of the dictionary, members are gathered in hierarchies (mHierarchy and mHierarchyNode). These tree-like structures may also describe basic arithmetical relationships between members (following the nesting and values of mHierarchyNode.ComparisonOperator and mHierarchyNode.UnaryOperator). Metrics (mMetric) are members of a selected domain that are further associated with period type, balance and data type attributes. In some cases, the latter could take form of a list of members of another domain (by reference to this domain and hierarchy of its members).



4.5.2.3 Information requirements (frameworks, taxonomies, modules, templates, and tables)

Information requirements are split in frameworks (mReportingFramework) that represent separate areas of interests/subject topics of collected data.

Frameworks are versioned as taxonomies (mTaxonomy) that identify data sets required at the particular moment of time (previous, current and potentially also future versions).

Taxonomies consists of templates (mTemplateOrTable with TemplateOrTableType = "TemplatesGroup", "Template" or "TemplateVariant") which are graphical tabular representations of information requirements as defined in the legal regulations. Templates may consist of multiple individual tables, being defined as such originally or split as a result of normalization of the original tables (mTemplateOrTable with TemplateOrTableType = "BusinessTable" or "AnnotatedTable").

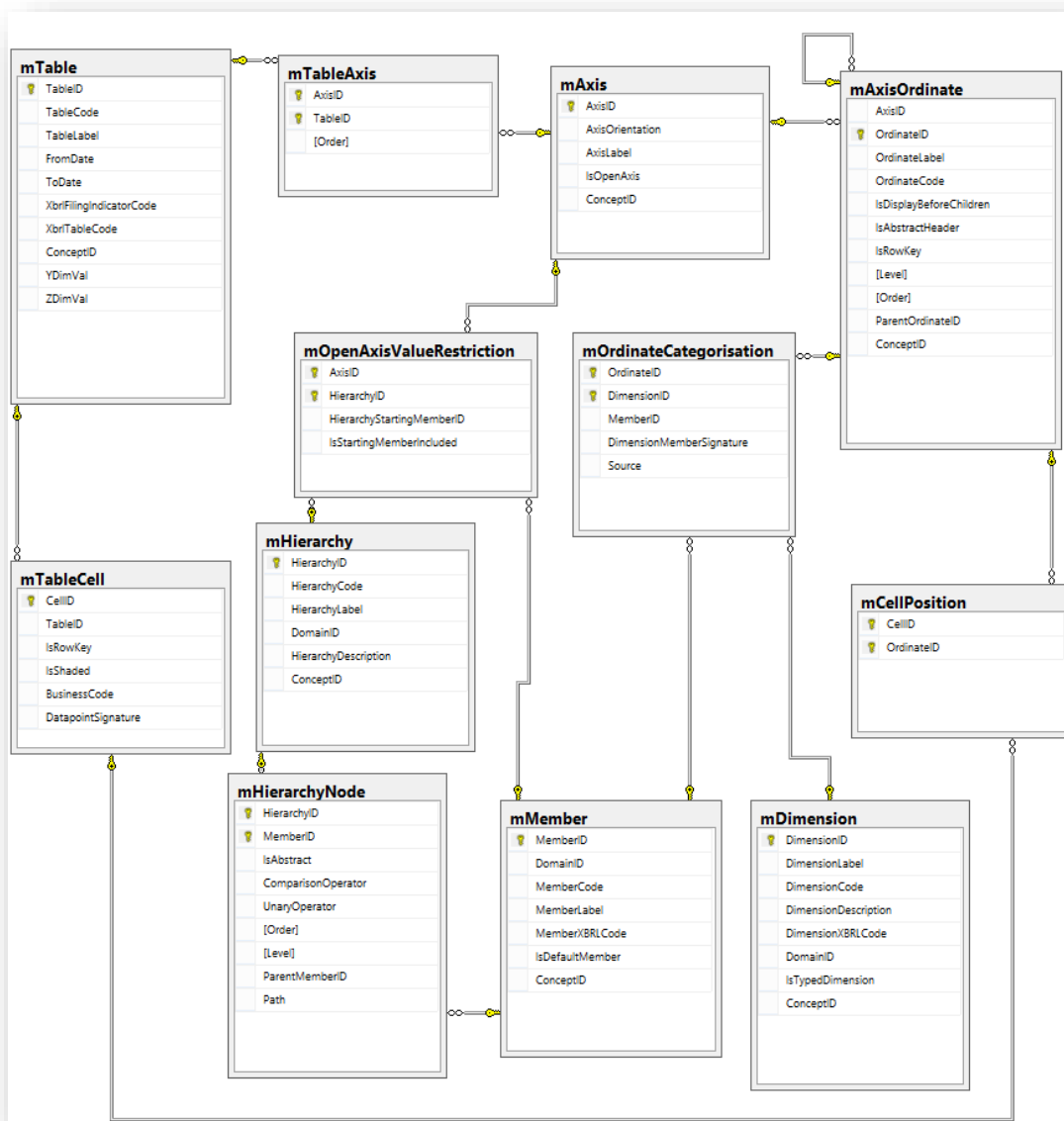
Description of actual tables starts with mTable entity. As in the EBA DPM MS Access database, tables can be reused by taxonomies if they remain unchanged between different versions of frameworks (mTaxonomyTable).

Taxonomies may define numerous templates. Depending on reporting period or type of a report not all templates must be filed under certain reporting scenario. Therefore modules (mModule) gather templates that are shall be submitted in one set (mModuleBusinessTemplate).



4.5.2.4 Tables and their components: axes, ordinates, cells

As described in the previous sections, actual tables are defined in mTable entity. There are linked with axes (mAxis) using mTableAxis entity. Each axis defines a section of the table represented as headers of columns (AxisOrientation = "X"), headers of rows (AxisOrientation = "Y") or pages/sheets (AxisOrientation = "Z") multiplying the table, typically represented as a drop-down combo box above the table or reproductions of table views in separate window tabs. Axis consists of ordinates representing each individual header of a row, column or page/sheet (depending on disposition of the axis their belong to). Similarly to headers, ordinates can be nested and result in graphs/tree-structures. Ordinates may be associated with the dictionary concepts (mOrdinateCategorisation) identifying dimensions and members hidden behind the row/column/page header they represent (usually corresponding to, but not always identical as the text of a header). Axes whose ordinates are identical to the member structures defined in domains can link to hierarchies and reuse them as a whole or in parts (mOpenAxisValueRestriction). Table cells occur on the intersection of axis ordinates (mCellPosition). Each cell represents none (grey shaded/criss-crossed), one or many data points (mTableCell).



4.5.2.5 *Validation rules*

Details on each validation rule are contained in vValidationRuleExpressionn entity. Application of each rule to modules and tables is indicated in mValidationRuleTables entity.